

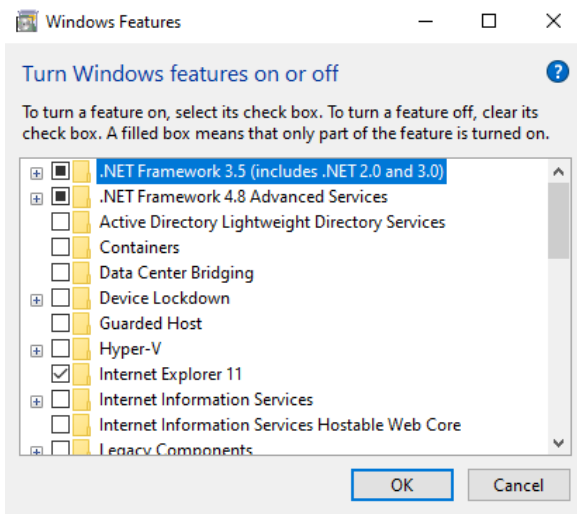
WMDC FIX FOR WINDOWS 10/11

This document describes the steps to get Windows Mobile Device Center (WMDC) working with Windows 10. This information is also applicable for computers running Windows 11.

Fixes the following issues: *WMDC fails to launch after installing WMDC; WMDC fails to connect to HC-100 after installing WMDC.*

Steps to install **WMDC**:

1. Ensure you have the latest Windows Updates on your Windows PC.
2. Ensure .net 3.5 is enabled
 - a. Click the **“Start”** button and type **“Turn Windows Features on or off”**
 - b. Check the **.NET Framework 3.5** box and click **OK**



3. Install **WMDC** using the following .exe installer:
 - a. For **64 Bit OS** use this installer: <https://vitals.turnvalves.com/drvupdate-amd64.exe>
 - b. For **32 Bit OS** use this installer: <https://vitals.turnvalves.com/drvupdate-x86.exe>
4. Run the **WMDC-fixes-for-Win10** file: <https://vitals.turnvalves.com/WMDC-fixes-for-Win10.msi>
5. Reboot computer when prompted.
6. Launch **WMDC** and connect HC-100 controller to PC.
 - a. WMDC should detect the HC-100 controller.



7. If WMDC doesn't detect the HC-100 controller follow the steps below:
 - a. Uninstall **WMDC**
 - i. Start → Settings → Apps

- ii. Uninstall both “**Windows Mobile Device Center**” and “**Windows Mobile Device Center Driver Update**”.
- b. Install **WMDC** again using the .exe installer from step 3 above.