

# Vitals Software and Tremble Recon Installation Guide



This guide will instruct on how to install and setup Vitals Desktop software, Tremble Recon configuration, data transfer between the two, and valve performance software.

## Installing Software:

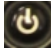
**1.** Download and install latest version of Microsoft “ActiveSync”, The most recent version can be found though Microsoft’s web site.  
<http://www.microsoft.com/downloads/en/A2ZPage.aspx>  
Select “setup.msi” and install when the download is finished.




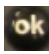
**2.** Download most up to date version of E.H. Wachs “Desktop Vitals” software. You can use the setup CD provided with the controller or connect with E.H. Wachs file sharing site.  
<http://fileshare.wachsco.com>  
User Name: vitals  
Password: vitals  
Select “Vitalsd X.X.X Setup.exe” and install when the download is finished.

| File Name                     | Size   | Date Published         |
|-------------------------------|--------|------------------------|
| NETCFV2.wm.armv4i.cab         | 2180KB | 09/01/2005 09:01:16 AM |
| rapi.dll                      | 135KB  | 11/13/2006 02:39:28 PM |
| System_SR_ENU_wm.cab          | 116KB  | 04/17/2009 01:52:33 PM |
| Vitals 3.1.3 Setup.exe        | 2840KB | 11/06/2009 11:00:23 AM |
| Vitals Desktop.exe            | 745KB  | 01/07/2010 02:23:38 PM |
| Vitals Install QuickGuide.pdf | 92KB   | 04/21/2008 10:38:39 AM |
| Vitals Mobile.exe             | 154KB  | 09/28/2010 02:08:35 PM |
| Vitals Release Notes.pdf      | 8KB    | 11/06/2009 02:04:18 PM |

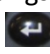
## Hardware Set up:

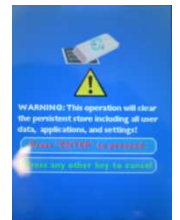
**A.** Begin by resetting the Trimble Recon, performed by holding down the “Power Button  ” for more than 5 seconds, As shown on the right.



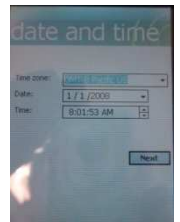
**B.** Immediately after the screen goes blank press and hold the “  ” and “  ”. This will in-turn reboot the Trimble Recon to it’s original factory setting.



**C.** The screen will then prompt the user one last time to reset to factory settings. Press the “Enter Button  ” and the unit will then restart.



**D.** Upon restart the unit will force a Touch Screen calibration and ask the user for Date and Time of that local area.



**E.** Finally returning to the start screen, connect the Tremble Recon to the computer by means of a USB cable.

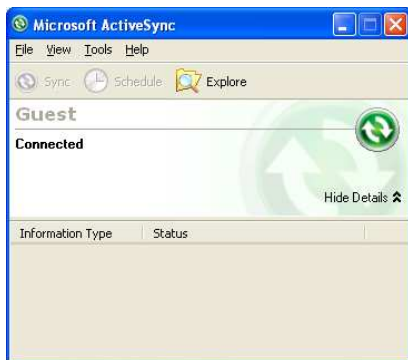


## Syncing Software and Hardware:

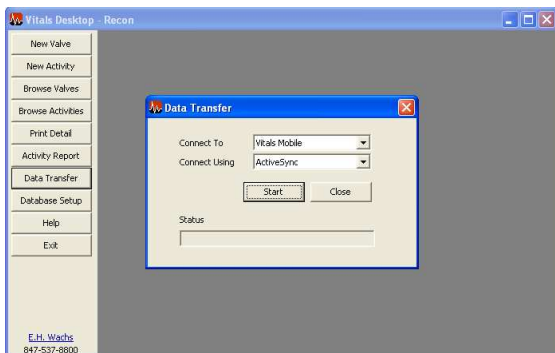
Your computer will prompt for a Pocket PC Sync Setup, simply click Cancel.



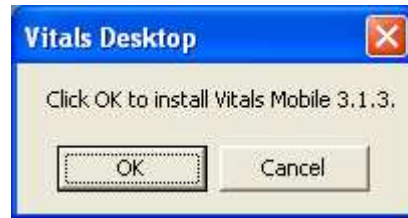
A Microsoft ActiveSync window will appear showing the status of your connection.



Open your Vitals Desktop and click on "Data Transfer" make sure your dropdown menus read: Connect To: "Vitals Mobile" Connect Using: "ActiveSync" Then click "start".



Vitals Desktop will offer to install Vitals Mobile onto your Tremble Recon, Click "OK" to install.



The two devices will now be Synced and ready for use in the field.

## Extra Step Installation of Prior Valve Maintenance:

If you have any data already recorded by an old unit, re-open that file through "Database Setup", and Sync again with "Data Transfer". Your valve ID's, and other information documented prior will now be shared on both Vitals Desktop and Tremble Recon.

